



# IP SOLUTION

Installation example

We specialize  
in SCADA  
software for  
Wind turbines

# Examples of the hosted solution

AN EXAMPLE ON HOW TURBINES ARE COVERED TO IP

In the example there are 2 parks with 2 turbines each.

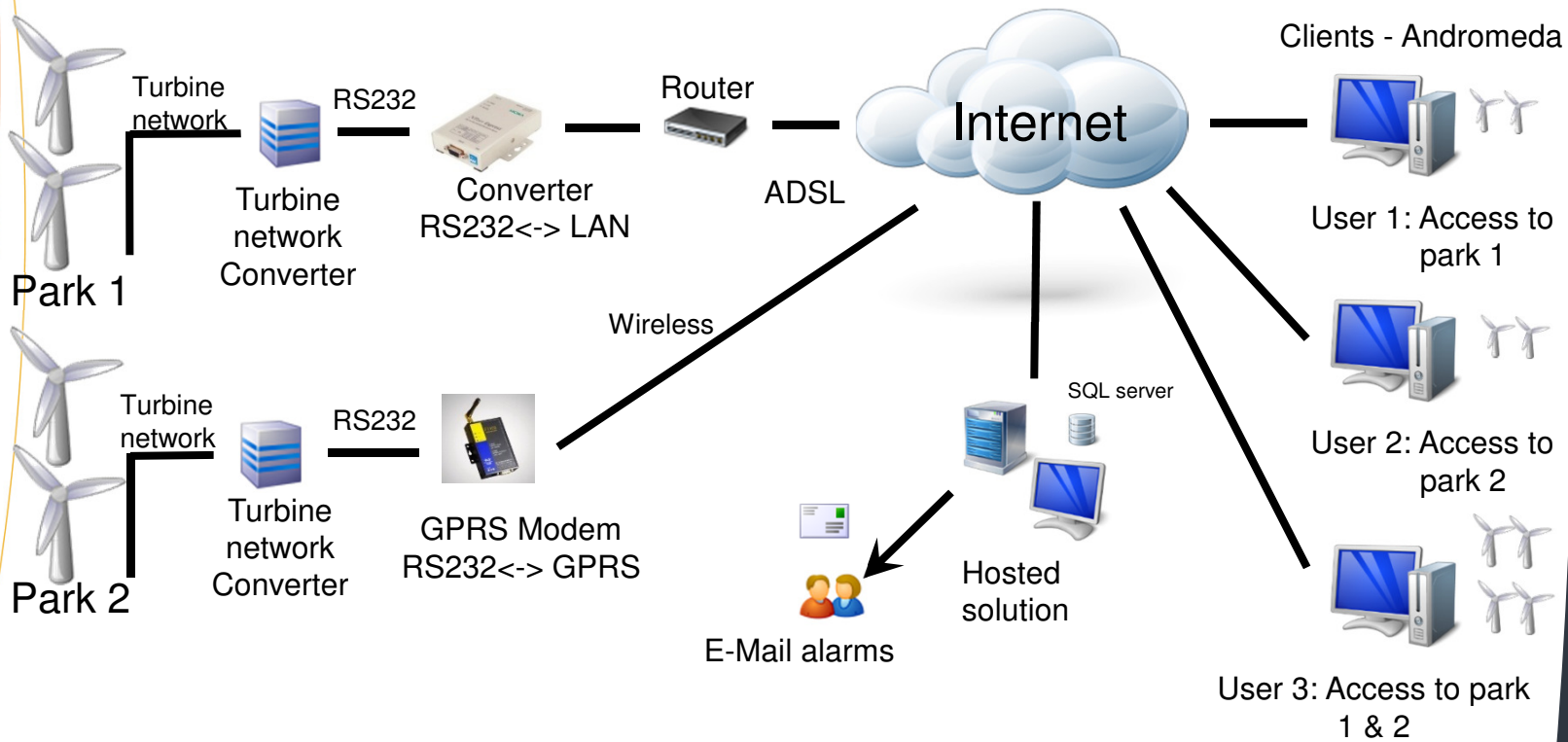
There are 3 users with individual access rights.

User 1 are allowed to see turbines from park 1

User 2 are allowed to see turbines from park 2

User 3 are allowed to see turbines from both park 1 and 2

One park is connected via landlines using ADSL and the second park is using mobile GPRS connections.



## Connection

No need for PSTN lines in turbine or on the client side.

The hosted solution uses TCP/IP connection via GPRS modems or ADSL lines.

Andromeda can be used to get access to the turbines via a TCP/IP connections through the our hosted solution.



## 24/7 monitoring

The hosted solution monitors the turbines 24/7 and reports all alarms or loss of connection immediately via SMS or E-Mail



## Platform support

Andromeda can run on a wide range of windows operating systems starting from Windows XP to Windows 8.

It supports both 32 and 64 bit platforms

Access to a wide range of turbine types:

- Nordtank
- NEG-Micon
- Micon
- Vestas
- Wind World
- Wincon
- HAG
- Jacobs
- Bonus / Siemens
- Repower
- DeWind
- Fuhrländer
- Nordex
- Tacke
- SüdWind
- FDV
- DanWind
- Orbital
- Lagerwey

And many more

Please contact us if your turbine is not on the list.



# IP SOLUTION

Distributed by:  
**WICOtech**



Hagemannsvej 13  
8600 Silkeborg  
Denmark  
Phone: +45 86 85 50 20  
[www.wicotech.com](http://www.wicotech.com)

 **PS-Data**

Tranbjerg Hovedgade 41  
8310 Tranbjerg  
Denmark  
Phone: +45 20 60 59 50  
[www.PS-Data.com](http://www.PS-Data.com)

## Installation example

We specialize  
in SCADA  
software for  
Wind turbines